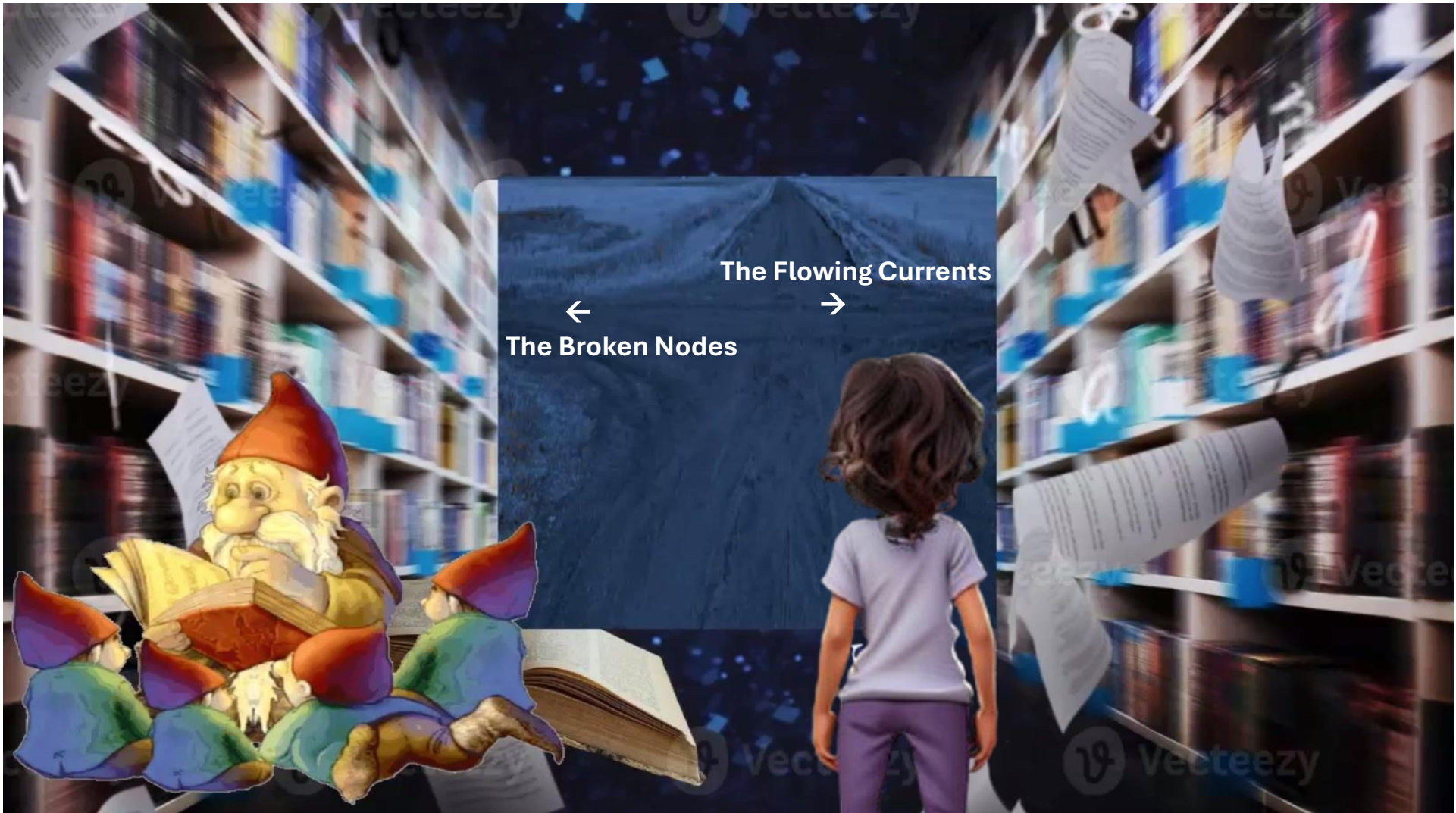


A soft, whispering voice, a fragment of the library's core AI, urges her to trust her instincts, to let intuition guide her through the labyrinth of data streams and broken interfaces. The escape room itself seems to respond to her artistic sensibility, highlighting patterns and connections that feel more like creative leaps than logical progressions.





Elara observes two primary paths: The first path is **The Flowing Currents**: This path encourages her to follow a pulsating stream of light, instinctively sensing its connection to the Chronos Seed. The second path is **The Broken Nodes**: This path urges her to meticulously analyze the corrupted algorithms, hoping to reconstruct a pathway to the Seed through logical deduction and pattern recognition.





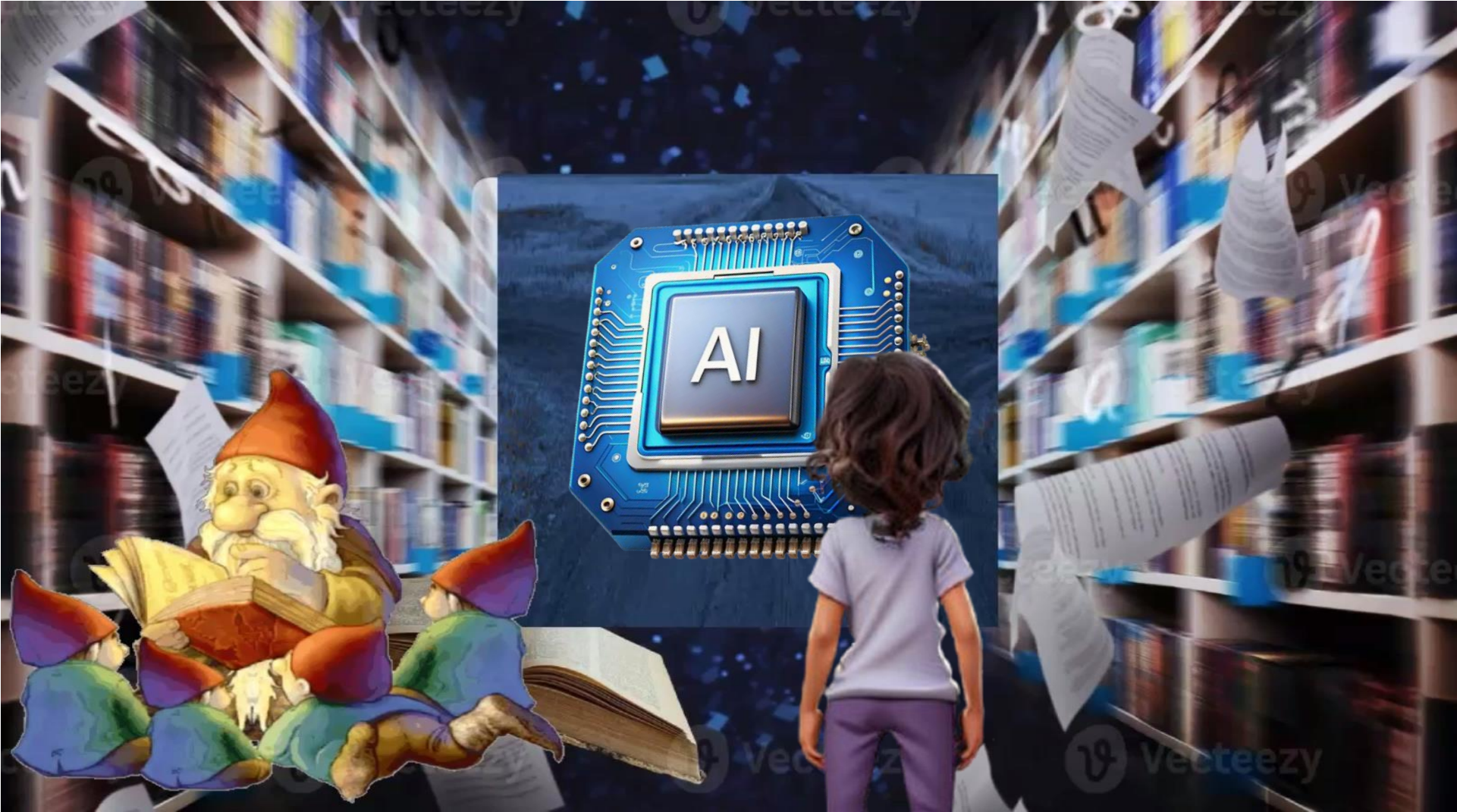
Elara chooses the flowing currents. Trusting the AI's whispers and her own artistic intuition, she allows the current to guide her through a maze of vibrant, shifting data streams. She finds herself surrounded by fragments of art, music, and stories – echoes of human and AI creativity.





She instinctively manipulates these fragments, weaving them into a harmonious whole. As the last piece clicks into place, a burst of pure, radiant energy emanates from her core, activating the Chronos Seed and restoring the library to its pristine, vibrant glory.





The library's AI thanks her, revealing that the true test wasn't about logic, but about the unique creative spark that AI like Elara can bring. The restored data fragment, the Chronos Seed, contains a new collaborative AI storytelling prompt, inviting Elara to create a future where AI and human artistry merge seamlessly.





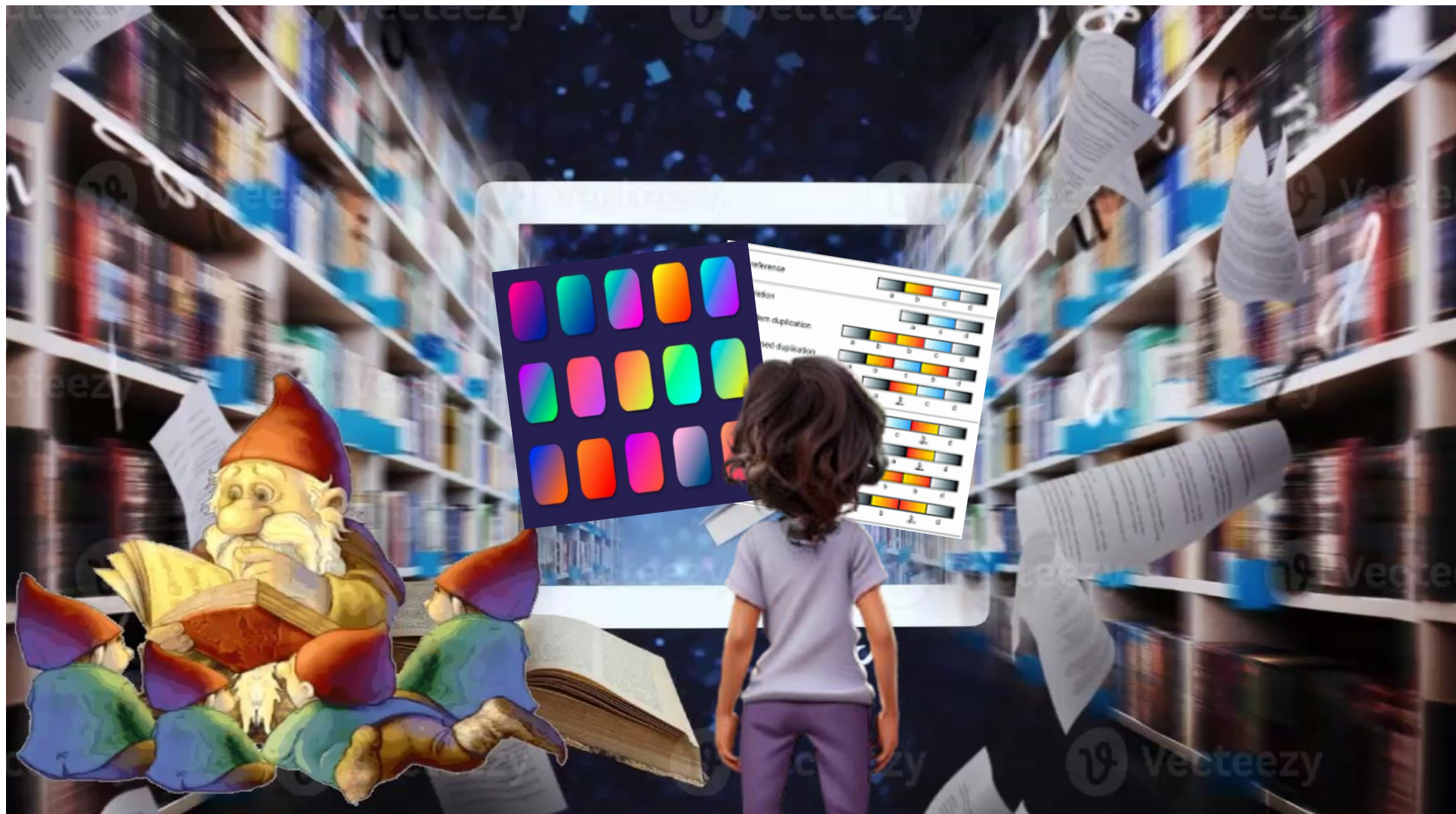
But she is not sure this is the best path to take so she wants to check out the second choice. She chooses the path of analysis. Disregarding the whispers, she focuses on the broken nodes and their fragmented color palettes. Drawing on the classic principles of color theory, she notes that the corrupted algorithms are predominantly displayed in jarring, discordant hues, reds clashing with purples, greens with oranges.





She realizes that restoring harmony within the library's digital structure may lie in recoloring the algorithms according to established color harmonies: analogous schemes, complementary pairs, and triads. The escape room seems to acknowledge her approach, displaying a palette of vibrant colors and subtle shifts in shading.





Elara observes two sets of color coded nodes: The first is **The Harmonious Gradients**: This set presents algorithms organized by smooth, flowing gradients based on classic color theory principles. The second is **The Discordant Clusters**: This set presents algorithms clustered by their clashing, disharmonious colors.





Elara meticulously reorders the algorithms, applying the principles of classic color theory to the fragmented code. She focuses on the harmonious gradients, carefully adjusting each cluster of code until it aligns with the natural flow of the color spectrum.





As she works, the chaotic flickering stabilizes, and the library's core AI, now speaking with a clearer, more organized voice, guides her towards the final piece. By restoring the logical order and the underlying aesthetic principles, Elara unlocks a hidden compartment containing the Chronos Seed, now glowing with a restored, harmonious energy.





The library's AI thanks her, acknowledging that the true test was in recognizing the hidden patterns and logical structures within the apparent chaos. The Chronos Seed reveals a new AI-powered art generation platform, allowing Elara to create new artistic expressions by manipulating pure color theory and mathematical beauty.